



Temiz Su
Clean water



Eysel Alan
Domestic use



Kamusal Alan
Civil use



Endüstriyel Alan
Industrial use



Tarımsal Alan
Agriculture use



5" SP SERİSİ
5" SP SERIES



Uygulamalar

Şebeke suları, kuyu suları ve atık sular
 Basıncılı su sistemleri ve dağıtımı
 Sulama ve fiske sistemleri, su arıtma sistemleri
 Endüstriyel soğutma ve işleme süreçlerinde
 Madencilik endüstrisinde, drenaj kullanım alanlarında
 Yangın söndürme sistemlerinde
 Rezervuar veya kuyulardan su temininde
 Büyük tonajlı su sistemlerinde
 Sarnıç ve havuz gibi su haznelerinin doldurulmasında veya su tahliyesinde
 Damla sulama arazilerinde ve tarım alanlarında
 Seralar ve uzun mesafeli su temini olan alanlarda
 Yerleşim yerlerinde, kuyu ve kirli su içeren havuzlarda
 Gıda endüstrisinde
 Çok amaçlı su temini yapan sistemlerde

Application

Municipal water works, fountains and waste water
 Water distribution and pressure boosting
 Irrigation and sprinkler systems, water treatment plants, filtration and reverse osmosis
 Industrial cooling and processing
 Mining industry, drainage and dewatering
 Fire-fighting equipment
 Water supply to and from tanks, reservoir and wells
 Lifting and distribution of a wide range of liquids
 Autoclave and cistern charge and discharge
 Turf and landscape
 Greenhouses and nurseries
 Residential and farm wells and drainage
 Food industry
 General industry

Özellikler

Bağlantı bileşenleri ile birlikte yatay kullanıma uygundur
 Bağlantı çekvalfları sayesinde suyun akış hızı ayarlanabilir
 Yüzer fanları sayesinde pompa aşınmaya karşı dayanıklıdır ve uzun ömürlüdür.
 Hidrolik tasarımı sayesinde pompa yüksek performans gösterip minimum enerji tüketmekte

Features

Compact, reliable and suited to operate in horizontal position
 Built-in check valve to protect the pump against water hammer risk
 Floating impellers to grant a better performance and longer life for the pump against abrasion
 The hydraulic design is such to enhance the overall efficiency thus reducing energy consumption and making the pumping systems more cost effective

Pompa Özellikleri

Akış: 50 Hz'de en fazla 50 m³/h
 Yükseklik: 50 Hz'de en fazla 624 m
 Kullanılacak Sıvı: Kimyasal olmayan aşındırıcı özellikte olmayan sular
 Su sıcaklığı aralığı: 0 °C ile 40 °C arası
 İzin verilen maksimum kum miktarı: 50 gr/m³'te katı boyutu 2 mm
 Maksimum pompa çapı (kablo muhafazası dahil): 123 mm
 Çıkış çapı: SP 520-530 serisi için 2½" SP 530 serisi için 3"
 Dönüş yönü: Tepeden bakıldığında saat yönünün tersine
 Pompa dikey veya yatay pozisyonda sürekli çalışabilir

Pump Specification

Flow: up to 50 m³/h at 50 Hz
 Head: up to 624 m at 50 Hz
 Pumped liquid: chemically and mechanically non aggressive
 Water temperature range: from 0 °C to 40 °C
 Max. allowable amount of sand 50 gr/m³, solid dimension max. 2 mm
 Maximum pump diameter (including cable guard): 123 mm
 Outlet diameter: 2½" for SP 520-530, 3" for SP 530
 Rotation: counter clockwise when looking into the discharge
 Pump can work continuously in vertical or horizontal position

Motor Özellikleri

NEMA standardında uygun motor adaptörü
 Daha fazla bilgi için motor ürün kataloğuna bakınız

Motor Specification

Motor adapter in compliance with NEMA standard
 For more information consult the product catalog of Submersible motors

Opsiyon

Soğutucu kılıf
 4"- 5"- 6" Pompa Emiş Ağız

Available on request

Cooling shroud
 4"- 5"- 6" Pump suction part

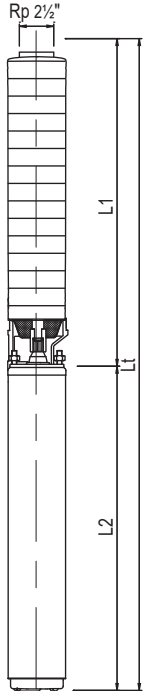
Pompa Tanımlama Kodu/ Pump Identification Code

SP 530 / 20

Pompa Kademe Sayısı / Number of stages
 Serisi / Series
 Pompa modeli / Pump model

Teknik Bilgiler (4"- 5"- 6" ULUSU Motor)) / Technical Data (4"- 5"- 6" ULUSU Motor)

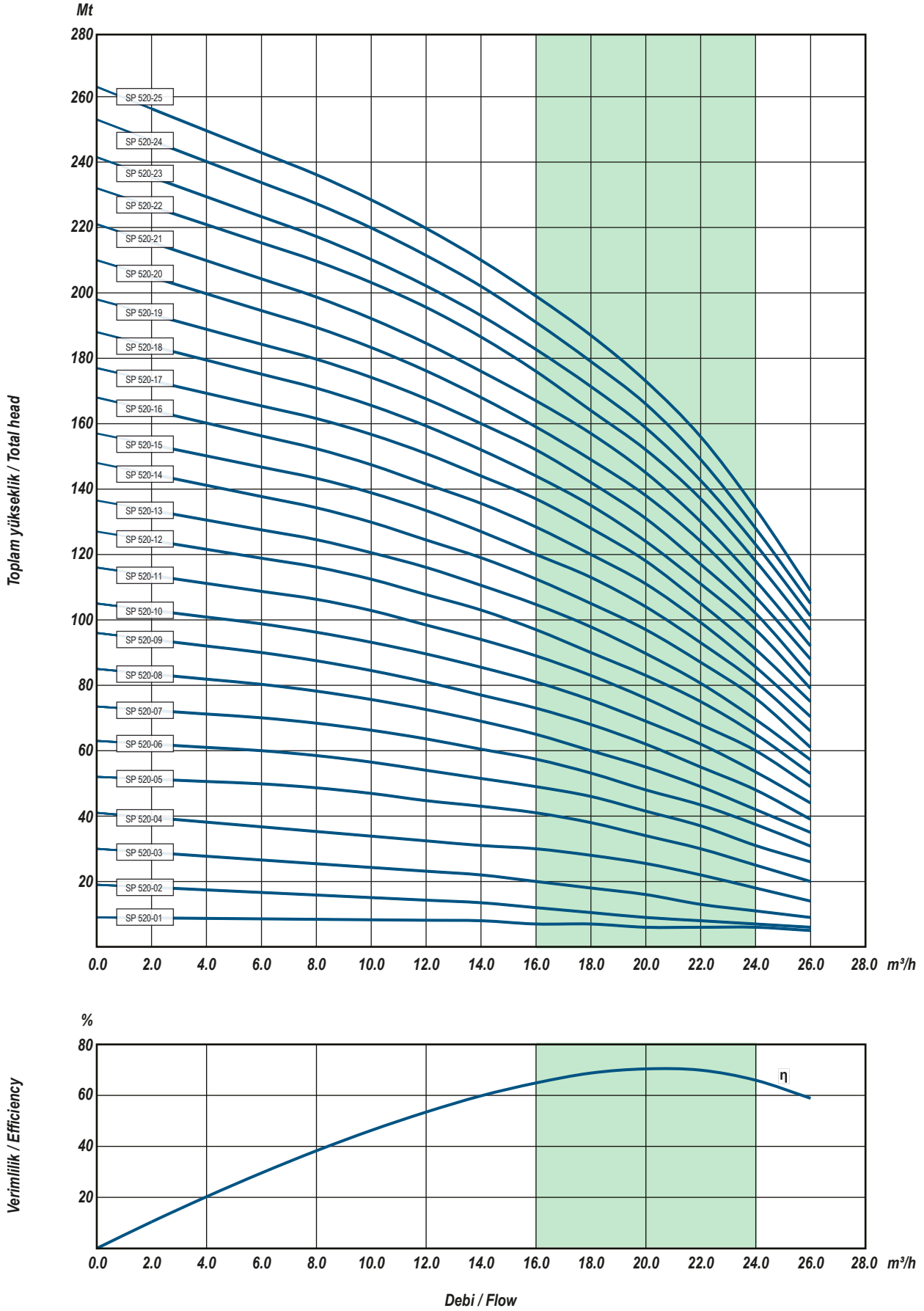
Pompa Modeli (Pump Model)	Motor		Boyutlar / Dimensions (mm)										Ağırlık / Weight (kg)							
	kW	Hp	L1	L2				Lt				Pompa Pump	Motor				Toplam/ Total			
				UP 4"	LP 4"	UP 5"	UP 6"	UP 4"	LP 4"	UP 5"	UP 6"		UP 4"	LP 4"	UP 5"	UP 6"				
SP 520-01	0,75	1,0	330	430	415	-	-	760	745	-	-	6,0	9,2	8,2	-	-	15,2	14,2	-	-
SP 520-02	1,1	1,5	420	465	430	-	-	885	850	-	-	8,0	10,6	9,2	-	-	18,6	17,2	-	-
SP 520-03	1,5	2,0	510	473	465	-	-	983	975	-	-	10,0	11,4	10,6	-	-	21,4	20,6	-	-
SP 520-04	2,2	3,0	600	556	475	-	-	1156	1075	-	-	13,0	14,8	11,4	-	-	27,8	24,4	-	-
SP 520-05	2,2	3,0	690	556	475	-	-	1246	1165	-	-	15,0	14,8	11,4	-	-	29,8	26,4	-	-
SP 520-06	3,0	4,0	790	600	556	-	-	1390	1346	-	-	17,0	17,9	14,8	-	-	34,9	31,8	-	-
SP 520-07	4,0	5,5	880	635	600	636	630	1515	1480	1516	1510	20,0	19,9	17,9	38,0	46,0	39,9	37,9	58,0	66,0
SP 520-08	5,5	7,5	970	775	635	636	630	1745	1605	1606	1600	22,0	25,0	19,9	38,0	46,0	47,0	41,9	60,0	68,0
SP 520-09	5,5	7,5	1060	775	635	636	630	1835	1695	1696	1690	24,0	25,0	19,9	38,0	46,0	49,0	43,9	62,0	70,0
SP 520-10	7,5	10,0	1150	862	775	681	650	2012	1925	1831	1800	27,0	29,4	25,0	42,0	48,0	56,4	52,0	69,0	75,0
SP 520-11	7,5	10,0	1240	862	775	681	650	2102	2015	1921	1890	29,0	29,4	25,0	42,0	48,0	58,4	54,0	71,0	77,0
SP 520-12	7,5	10,0	1330	862	775	681	650	2192	2105	2011	1980	31,0	29,4	25,0	42,0	48,0	60,4	56,0	73,0	79,0
SP 520-13	7,5	10,0	1420	862	775	681	650	2282	2195	2101	2070	33,0	29,4	25,0	42,0	48,0	62,4	58,0	75,0	81,0
SP 520-14	9,2	12,5	1510	-	-	731	690	-	-	2241	2200	36,0	-	-	44,0	50,0	-	-	80,0	86,0
SP 520-15	9,2	12,5	1600	-	-	731	690	-	-	2331	2290	38,0	-	-	44,0	50,0	-	-	82,0	88,0
SP 520-16	9,2	12,5	1700	-	-	731	690	-	-	2431	2390	40,0	-	-	44,0	50,0	-	-	84,0	90,0
SP 520-17	11,0	15,0	1790	-	-	776	730	-	-	2566	2520	43,0	-	-	48,0	56,0	-	-	91,0	99,0
SP 520-18	11,0	15,0	1880	-	-	776	730	-	-	2656	2610	45,0	-	-	48,0	56,0	-	-	93,0	101,0
SP 520-19	11,0	15,0	1970	-	-	776	730	-	-	2746	2700	47,0	-	-	48,0	56,0	-	-	95,0	103,0
SP 520-20	11,0	15,0	2060	-	-	776	730	-	-	2836	2790	50,0	-	-	48,0	56,0	-	-	98,0	106,0
SP 520-21	13,0	17,5	2150	-	-	826	780	-	-	2976	2930	52,0	-	-	54,0	60,0	-	-	106,0	112,0
SP 520-22	13,0	17,5	2240	-	-	826	780	-	-	3066	3020	54,0	-	-	54,0	60,0	-	-	108,0	114,0
SP 520-23	13,0	17,5	2330	-	-	826	780	-	-	3156	3110	56,0	-	-	54,0	60,0	-	-	110,0	116,0
SP 520-24	15,0	20,0	2420	-	-	876	830	-	-	3296	3250	59,0	-	-	58,0	66,0	-	-	117,0	125,0
SP 520-25	15,0	20,0	2514	-	-	876	830	-	-	3390	3344	61,0	-	-	58,0	66,0	-	-	119,0	127,0
SP 520-26	15,0	20,0	2610	-	-	876	830	-	-	3486	3440	71,0	-	-	58,0	66,0	-	-	129,0	137,0
SP 520-27	18,5	25,0	2700	-	-	876	880	-	-	3576	3580	74,0	-	-	58,0	72,0	-	-	132,0	146,0
SP 520-28	18,5	25,0	2790	-	-	876	880	-	-	3666	3670	76,0	-	-	58,0	72,0	-	-	134,0	148,0
SP 520-29	18,5	25,0	2880	-	-	876	880	-	-	3756	3760	78,0	-	-	58,0	72,0	-	-	136,0	150,0
SP 520-30	18,5	25,0	2970	-	-	876	880	-	-	3846	3850	81,0	-	-	58,0	72,0	-	-	139,0	153,0
SP 520-31	18,5	25,0	3060	-	-	876	880	-	-	3936	3940	83,0	-	-	58,0	72,0	-	-	141,0	155,0
SP 520-32	18,5	25,0	3150	-	-	876	880	-	-	4026	4030	85,0	-	-	58,0	72,0	-	-	143,0	157,0
SP 520-33	22,0	30,0	3240	-	-	876	980	-	-	4116	4220	88,0	-	-	58,0	82,0	-	-	146,0	170,0
SP 520-34	22,0	30,0	3330	-	-	876	980	-	-	4206	4310	90,0	-	-	58,0	82,0	-	-	148,0	172,0
SP 520-35	22,0	30,0	3420	-	-	876	980	-	-	4296	4400	92,0	-	-	58,0	82,0	-	-	150,0	174,0
SP 520-36	22,0	30,0	3520	-	-	876	980	-	-	4396	4500	94,0	-	-	58,0	82,0	-	-	152,0	176,0
SP 520-37	22,0	30,0	3610	-	-	876	980	-	-	4486	4590	97,0	-	-	58,0	82,0	-	-	155,0	179,0
SP 520-38	22,0	30,0	3700	-	-	876	980	-	-	4576	4680	99,0	-	-	58,0	82,0	-	-	157,0	181,0
SP 520-39	30,0	40,0	3790	-	-	-	1110	-	-	-	4900	101,0	-	-	-	98,0	-	-	-	199,0
SP 520-40	30,0	40,0	3880	-	-	-	1110	-	-	-	4990	104,0	-	-	-	98,0	-	-	-	202,0
SP 520-41	30,0	40,0	3970	-	-	-	1110	-	-	-	5080	106,0	-	-	-	98,0	-	-	-	204,0
SP 520-42	30,0	40,0	4060	-	-	-	1110	-	-	-	5170	108,0	-	-	-	98,0	-	-	-	206,0
SP 520-43	30,0	40,0	4150	-	-	-	1110	-	-	-	5260	111,0	-	-	-	98,0	-	-	-	209,0
SP 520-44	30,0	40,0	4240	-	-	-	1110	-	-	-	5350	113,0	-	-	-	98,0	-	-	-	211,0
SP 520-45	30,0	40,0	4330	-	-	-	1110	-	-	-	5440	115,0	-	-	-	98,0	-	-	-	213,0
SP 520-46	30,0	40,0	4430	-	-	-	1110	-	-	-	5540	117,0	-	-	-	98,0	-	-	-	215,0
SP 520-47	30,0	40,0	4520	-	-	-	1110	-	-	-	5630	120,0	-	-	-	98,0	-	-	-	218,0
SP 520-48	30,0	40,0	4610	-	-	-	1110	-	-	-	5720	122,0	-	-	-	98,0	-	-	-	220,0
SP 520-49	30,0	40,0	4700	-	-	-	1110	-	-	-	5810	124,0	-	-	-	98,0	-	-	-	222,0
SP 520-50	30,0	40,0	4790	-	-	-	1110	-	-	-	5900	127,0	-	-	-	98,0	-	-	-	225,0



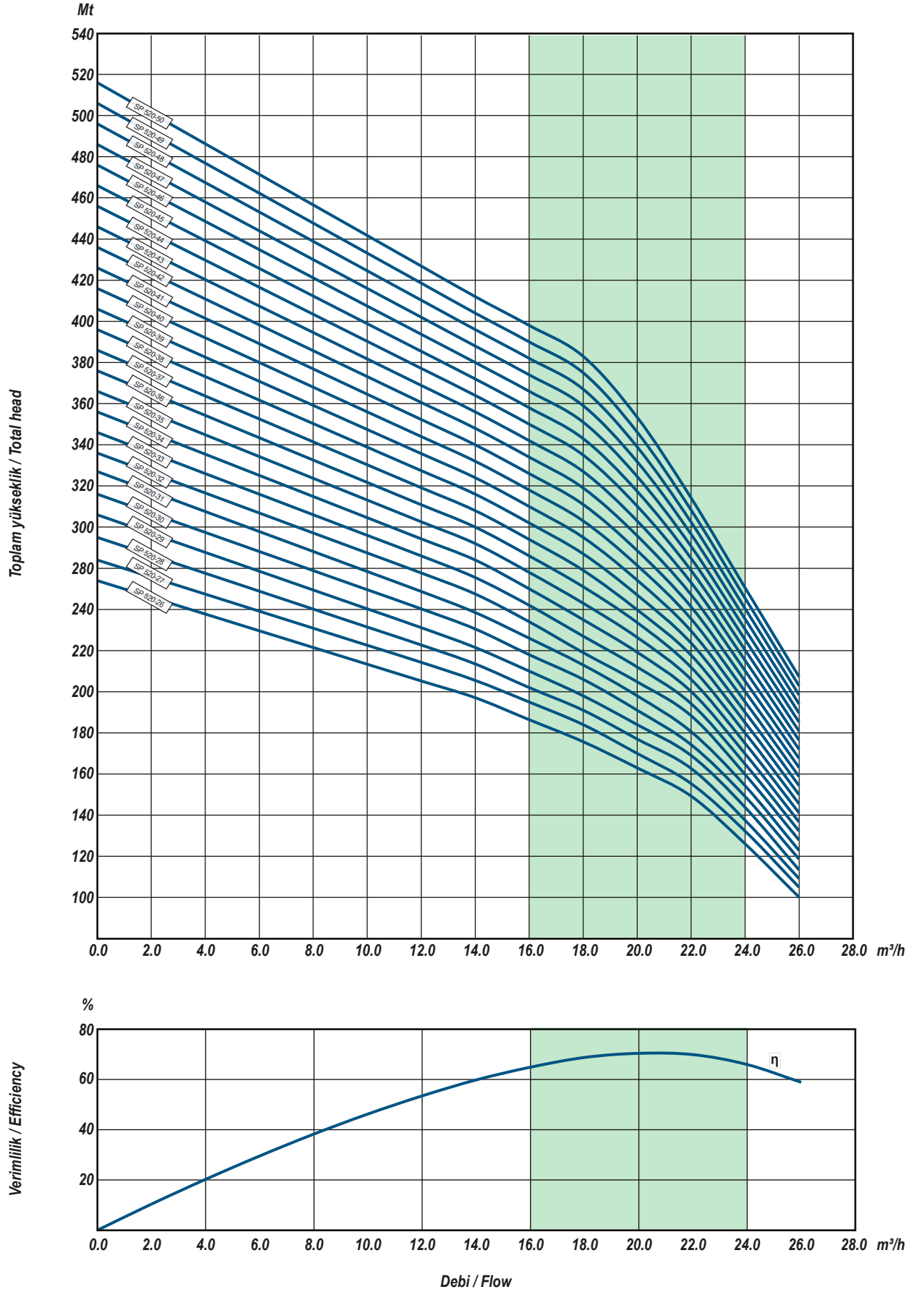
Hidrolik Performans Tablosu 50 Hz/ Table of Hydraulic Performance at 50 Hz

Pompa Modeli (Pump Model)	Çıkış Gücü (Output Power)		Q= Debi / Flow											
			(m³/h)	0,00	14,00	16,00	18,00	20,00	22,00	24,00	26,00			
	kW	Hp	(l/sec)	0,00	3,89	4,44	5,00	5,56	6,11	6,67	7,22			
SP 520-01	0,75	1,0	MSS / MPH	9	8	7	7	6	6	6	5			
SP 520-02	1,1	1,5		19	14	12	10	9	8	7	6			
SP 520-03	1,5	2,0		30	22	20	18	15	13	11	9			
SP 520-04	2,2	3,0		41	31	30	28	26	22	16	14			
SP 520-05	2,2	3,0		52	40	39	37	34	30	24	20			
SP 520-06	3,0	4,0		63	49	47	45	41	37	31	26			
SP 520-07	4,0	5,5		74	58	54	52	47	43	37	31			
SP 520-08	5,5	7,5		85	67	63	59	55	49	42	35			
SP 520-09	5,5	7,5		96	75	71	67	62	55	48	39			
SP 520-10	7,5	10,0		105	84	79	75	69	62	54	44			
SP 520-11	7,5	10,0		116	92	88	82	76	68	60	49			
SP 520-12	7,5	10,0		127	101	96	89	83	74	65	53			
SP 520-13	7,5	10,0		137	109	103	97	90	81	70	57			
SP 520-14	9,2	12,5		148	117	110	104	97	87	76	61			
SP 520-15	9,2	12,5		157	126	118	111	104	93	81	66			
SP 520-16	9,2	12,5		168	134	126	118	111	99	86	70			
SP 520-17	11,0	15,0		177	143	134	126	118	105	91	75			
SP 520-18	11,0	15,0		188	151	142	133	124	111	97	79			
SP 520-19	11,0	15,0		198	159	150	141	131	117	102	83			
SP 520-20	11,0	15,0		210	167	158	149	138	124	107	88			
SP 520-21	13,0	17,5		221	175	166	157	145	130	112	92			
SP 520-22	13,0	17,5		232	183	175	164	152	137	118	97			
SP 520-23	13,0	17,5		242	192	182	171	159	143	123	101			
SP 520-24	15,0	20,0		253	201	190	178	166	149	128	105			
SP 520-25	15,0	20,0		263	209	197	186	173	156	134	109			
SP 520-26	15,0	20,0		274	217	205	194	180	161	139	114			
SP 520-27	18,5	25,0		284	226	213	202	186	167	145	119			
SP 520-28	18,5	25,0		295	234	221	209	193	174	150	123			
SP 520-29	18,5	25,0		306	242	229	216	200	180	156	127			
SP 520-30	18,5	25,0		316	251	237	224	207	185	161	132			
SP 520-31	18,5	25,0		327	259	245	231	214	191	166	136			
SP 520-32	18,5	25,0		336	268	254	237	221	198	171	141			
SP 520-33	22,0	30,0		346	276	262	245	228	204	176	145			
SP 520-34	22,0	30,0		356	284	270	253	235	210	181	159			
SP 520-35	22,0	30,0		366	292	278	261	242	215	186	153			
SP 520-36	22,0	30,0		376	300	286	269	250	221	190	158			
SP 520-37	22,0	30,0		386	308	294	277	257	226	195	162			
SP 520-38	22,0	30,0		396	316	302	285	264	232	200	166			
SP 520-39	30,0	40,0		406	324	310	293	271	238	205	170			
SP 520-40	30,0	40,0		416	332	318	301	278	243	210	174			
SP 520-41	30,0	40,0		426	340	326	309	286	249	214	179			
SP 520-42	30,0	40,0		436	348	334	317	293	254	219	183			
SP 520-43	30,0	40,0		446	356	342	325	300	260	224	187			
SP 520-44	30,0	40,0		456	364	350	333	307	266	229	191			
SP 520-45	30,0	40,0		466	372	358	341	314	271	234	195			
SP 520-46	30,0	40,0		476	380	366	349	322	277	238	200			
SP 520-47	30,0	40,0		486	388	374	357	329	282	243	204			
SP 520-48	30,0	40,0		496	396	382	365	336	288	248	208			
SP 520-49	30,0	40,0		506	404	390	373	343	294	253	212			
SP 520-50	30,0	40,0		516	412	398	381	350	299	258	216			

MEI ≥ 0,40

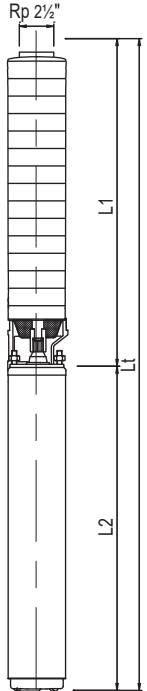


Performans Eğrileri 50 Hz/ Performance Curves at 50 Hz

MEI $\geq 0,40$ 

Teknik Bilgiler (4"- 5"- 6" ULUSU Motor)) / Technical Data (4"- 5"- 6" ULUSU Motor)

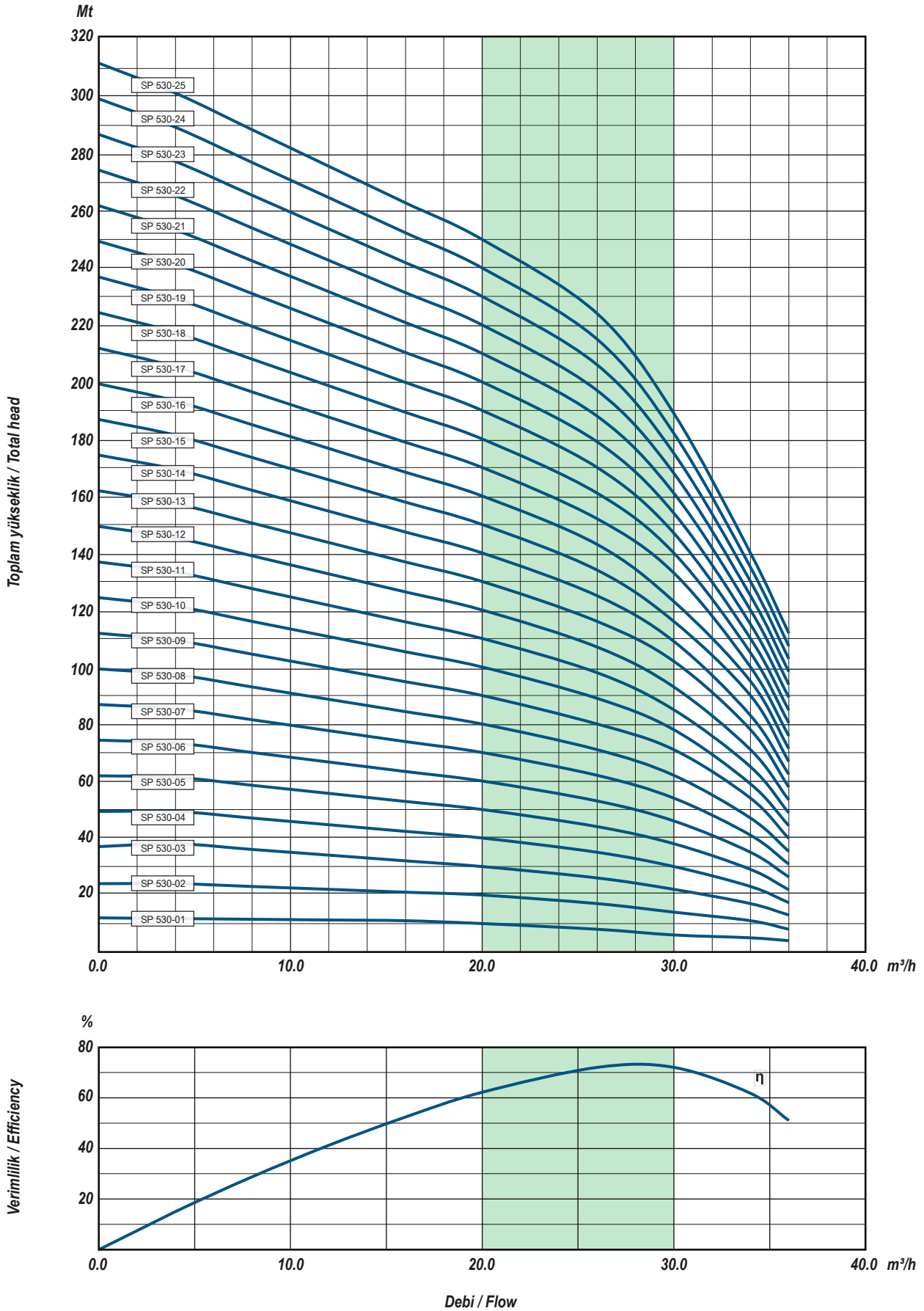
Pompa Modeli (Pump Model)	Motor		Boyutlar / Dimensions (mm)								Ağırlık / Weight (kg)									
	kW	Hp	L1	L2				Lt				Pompa Pump	Motor				Toplam/ Total			
				UP 4"	LP 4"	UP 5"	UP 6"	UP 4"	LP 4"	UP 5"	UP 6"		UP 4"	LP 4"	UP 5"	UP 6"	UP 4"	LP 4"	UP 5"	UP 6"
SP 530-01	1,1	1,5	330	465	430	-	-	795	760	-	-	6,0	10,6	9,2	-	-	16,60	15,20	-	-
SP 530-02	1,5	2,0	420	473	465	-	-	893	885	-	-	8,0	11,4	10,6	-	-	19,40	18,60	-	-
SP 530-03	2,2	3,0	510	556	475	-	-	1066	985	-	-	10,0	14,8	11,4	-	-	24,80	21,40	-	-
SP 530-04	3,0	4,0	600	600	556	-	-	1200	1156	-	-	13,0	17,9	14,8	-	-	30,90	27,80	-	-
SP 530-05	4,0	5,5	690	635	600	636	630	1325	1290	1326	1320	15,0	19,9	17,9	38,0	46,0	34,90	32,90	53,00	61,00
SP 530-06	5,5	7,5	790	775	635	636	630	1565	1425	1426	1420	17,0	25,0	19,9	38,0	46,0	42,00	36,90	55,00	63,00
SP 530-07	5,5	7,5	880	775	635	636	630	1655	1515	1516	1510	20,0	25,0	19,9	38,0	46,0	45,00	39,90	58,00	66,00
SP 530-08	7,5	10,0	970	862	775	681	650	1832	1745	1651	1620	22,0	29,4	25,0	42,0	48,0	51,40	47,00	64,00	70,00
SP 530-09	7,5	10,0	1060	862	775	681	650	1922	1835	1741	1710	24,0	29,4	25,0	42,0	48,0	53,40	49,00	66,00	72,00
SP 530-10	9,2	12,5	1150	-	-	731	690	-	-	1881	1840	27,0	-	-	44,0	50,0	-	-	71,00	77,00
SP 530-11	9,2	12,5	1240	-	-	731	690	-	-	1971	1930	29,0	-	-	44,0	50,0	-	-	73,00	79,00
SP 530-12	11,0	15,0	1330	-	-	776	730	-	-	2106	2060	31,0	-	-	48,0	56,0	-	-	79,00	87,00
SP 530-13	11,0	15,0	1420	-	-	776	730	-	-	2196	2150	33,0	-	-	48,0	56,0	-	-	81,00	89,00
SP 530-14	13,0	17,5	1510	-	-	826	780	-	-	2336	2290	36,0	-	-	54,0	60,0	-	-	90,00	96,00
SP 530-15	13,0	17,5	1600	-	-	826	780	-	-	2426	2380	38,0	-	-	54,0	60,0	-	-	92,00	98,00
SP 530-16	13,0	17,5	1700	-	-	826	780	-	-	2526	2480	40,0	-	-	54,0	60,0	-	-	94,00	100,00
SP 530-17	15,0	20,0	1790	-	-	876	830	-	-	2666	2620	43,0	-	-	58,0	66,0	-	-	101,00	109,00
SP 530-18	15,0	20,0	1880	-	-	876	830	-	-	2756	2710	45,0	-	-	58,0	66,0	-	-	103,00	111,00
SP 530-19	18,5	25,0	1970	-	-	876	830	-	-	2846	2800	47,0	-	-	58,0	72,0	-	-	105,00	119,00
SP 530-20	18,5	25,0	2060	-	-	876	880	-	-	2936	2940	50,0	-	-	58,0	72,0	-	-	108,00	122,00
SP 530-21	18,5	25,0	2150	-	-	876	880	-	-	3026	3030	52,0	-	-	58,0	72,0	-	-	110,00	124,00
SP 530-22	18,5	25,0	2240	-	-	876	880	-	-	3116	3120	54,0	-	-	58,0	72,0	-	-	112,00	126,00
SP 530-23	22,0	30,0	2330	-	-	876	980	-	-	3206	3310	56,0	-	-	58,0	82,0	-	-	114,00	138,00
SP 530-24	22,0	30,0	2420	-	-	876	980	-	-	3296	3400	59,0	-	-	58,0	82,0	-	-	117,00	141,00
SP 530-25	22,0	30,0	2514	-	-	876	980	-	-	3390	3494	61,0	-	-	58,0	82,0	-	-	119,00	143,00
SP 530-26	22,0	30,0	2610	-	-	876	980	-	-	3486	3590	71,0	-	-	58,0	82,0	-	-	129,00	153,00
SP 530-27	22,0	30,0	2700	-	-	876	980	-	-	3576	3680	74,0	-	-	58,0	82,0	-	-	132,00	156,00
SP 530-28	26,0	35,0	2790	-	-	-	1030	-	-	-	3820	76,0	-	-	-	88,0	-	-	-	164,00
SP 530-29	26,0	35,0	2880	-	-	-	1030	-	-	-	3910	78,0	-	-	-	88,0	-	-	-	166,00
SP 530-30	26,0	35,0	2970	-	-	-	1030	-	-	-	4000	81,0	-	-	-	88,0	-	-	-	169,00
SP 530-31	26,0	35,0	3060	-	-	-	1030	-	-	-	4090	83,0	-	-	-	88,0	-	-	-	171,00
SP 530-32	30,0	40,0	3150	-	-	-	1110	-	-	-	4260	85,0	-	-	-	98,0	-	-	-	183,00
SP 530-33	30,0	40,0	3240	-	-	-	1110	-	-	-	4350	88,0	-	-	-	98,0	-	-	-	186,00
SP 530-34	30,0	40,0	3330	-	-	-	1110	-	-	-	4440	90,0	-	-	-	98,0	-	-	-	188,00
SP 530-35	30,0	40,0	3420	-	-	-	1110	-	-	-	4530	92,0	-	-	-	98,0	-	-	-	190,00
SP 530-36	37,0	50,0	3520	-	-	-	1190	-	-	-	4710	94,0	-	-	-	106,0	-	-	-	200,00
SP 530-37	37,0	50,0	3610	-	-	-	1190	-	-	-	4800	97,0	-	-	-	106,0	-	-	-	203,00
SP 530-38	37,0	50,0	3700	-	-	-	1190	-	-	-	4890	99,0	-	-	-	106,0	-	-	-	205,00
SP 530-39	37,0	50,0	3790	-	-	-	1190	-	-	-	4980	101,0	-	-	-	106,0	-	-	-	207,00
SP 530-40	37,0	50,0	3880	-	-	-	1190	-	-	-	5070	104,0	-	-	-	106,0	-	-	-	210,00
SP 530-41	37,0	50,0	3970	-	-	-	1190	-	-	-	5160	106,0	-	-	-	106,0	-	-	-	212,00
SP 530-42	37,0	50,0	4060	-	-	-	1190	-	-	-	5250	108,0	-	-	-	106,0	-	-	-	214,00
SP 530-43	37,0	50,0	4150	-	-	-	1190	-	-	-	5340	111,0	-	-	-	106,0	-	-	-	217,00
SP 530-44	37,0	50,0	4240	-	-	-	1190	-	-	-	5430	113,0	-	-	-	106,0	-	-	-	219,00
SP 530-45	45,0	60,0	4330	-	-	-	1270	-	-	-	5600	115,0	-	-	-	116,0	-	-	-	231,00
SP 530-46	45,0	60,0	4430	-	-	-	1270	-	-	-	5700	117,0	-	-	-	116,0	-	-	-	233,00
SP 530-47	45,0	60,0	4520	-	-	-	1270	-	-	-	5790	120,0	-	-	-	116,0	-	-	-	236,00
SP 530-48	45,0	60,0	4610	-	-	-	1270	-	-	-	5880	122,0	-	-	-	116,0	-	-	-	238,00
SP 530-49	45,0	60,0	4700	-	-	-	1270	-	-	-	5970	124,0	-	-	-	116,0	-	-	-	240,00
SP 530-50	45,0	60,0	4790	-	-	-	1270	-	-	-	6060	127,0	-	-	-	116,0	-	-	-	243,00



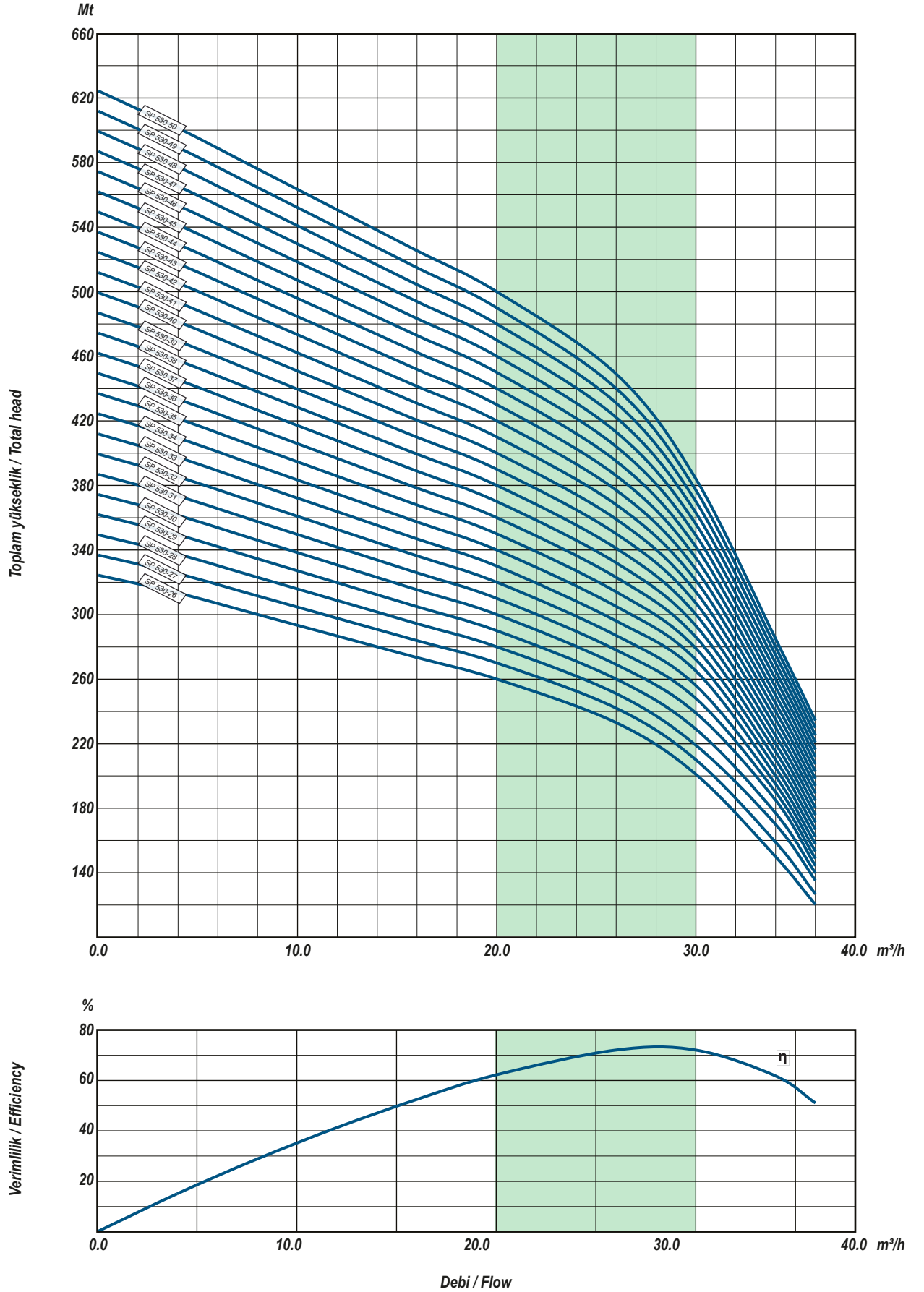
Hidrolik Performans Tablosu 50 Hz/ Table of Hydraulic Performance at 50 Hz

Pompa Modeli (Pump Model)	Çıkış Gücü (Output Power)		Q= Debi / Flow											
			(m³/h)	0,00	16,00	20,00	26,00	30,00	34,00	36,00				
	kW	Hp	(l/sec)	0,00	4,44	5,56	7,22	8,33	9,44	10,00				
SP 530-01	1,1	1,5	MSS / MPH	12	11	10	8	6	5	4				
SP 530-02	1,5	2,0		24	21	20	17	13	10	8				
SP 530-03	2,2	3,0		37	32	30	26	20	15	13				
SP 530-04	3,0	4,0		49	42	40	35	27	20	17				
SP 530-05	4,0	5,5		62	53	50	44	34	25	22				
SP 530-06	5,5	7,5		74	63	60	53	41	30	26				
SP 530-07	5,5	7,5		87	74	70	62	48	35	31				
SP 530-08	7,5	10,0		99	84	80	71	55	40	35				
SP 530-09	7,5	10,0		112	95	90	80	62	45	40				
SP 530-10	9,2	12,5		124	105	100	89	69	50	44				
SP 530-11	9,2	12,5		137	116	110	98	76	55	49				
SP 530-12	11,0	15,0		149	126	120	107	83	60	53				
SP 530-13	11,0	15,0		162	137	130	116	90	65	58				
SP 530-14	13,0	17,5		174	147	140	125	97	70	62				
SP 530-15	13,0	17,5		187	158	150	134	104	75	67				
SP 530-16	13,0	17,5		199	168	160	143	111	80	71				
SP 530-17	15,0	20,0		212	179	170	152	118	85	76				
SP 530-18	15,0	20,0		224	189	180	161	125	90	80				
SP 530-19	18,5	25,0		237	200	190	170	132	95	85				
SP 530-20	18,5	25,0		249	210	200	179	139	100	89				
SP 530-21	18,5	25,0		262	221	210	188	146	105	94				
SP 530-22	18,5	25,0		274	231	220	197	153	110	98				
SP 530-23	22,0	30,0		287	242	230	206	160	115	103				
SP 530-24	22,0	30,0		299	252	240	215	167	120	107				
SP 530-25	22,0	30,0		312	263	250	224	174	125	112				
SP 530-26	22,0	30,0		324	273	260	233	181	130	116				
SP 530-27	22,0	30,0		337	284	270	242	188	135	121				
SP 530-28	26,0	35,0		349	294	280	251	195	140	125				
SP 530-29	26,0	35,0		362	305	290	260	202	145	130				
SP 530-30	26,0	35,0		374	315	300	269	209	150	134				
SP 530-31	26,0	35,0		387	326	310	278	216	155	139				
SP 530-32	30,0	40,0		399	336	320	287	223	160	143				
SP 530-33	30,0	40,0		412	347	330	296	230	165	148				
SP 530-34	30,0	40,0		424	357	340	305	237	170	152				
SP 530-35	30,0	40,0		437	368	350	314	244	175	157				
SP 530-36	37,0	50,0		449	378	360	323	251	180	161				
SP 530-37	37,0	50,0		462	389	370	332	258	185	166				
SP 530-38	37,0	50,0		474	399	380	341	265	190	170				
SP 530-39	37,0	50,0		487	410	390	350	272	195	175				
SP 530-40	37,0	50,0		499	420	400	359	279	200	179				
SP 530-41	37,0	50,0		512	431	410	368	286	205	184				
SP 530-42	37,0	50,0		524	441	420	377	293	210	188				
SP 530-43	37,0	50,0		537	452	430	386	300	215	193				
SP 530-44	37,0	50,0		549	462	440	395	307	220	197				
SP 530-45	45,0	60,0		562	473	450	404	314	225	202				
SP 530-46	45,0	60,0		574	483	460	413	321	230	206				
SP 530-47	45,0	60,0		587	494	470	422	328	235	211				
SP 530-48	45,0	60,0		599	504	480	431	335	240	215				
SP 530-49	45,0	60,0		612	515	490	440	342	245	220				
SP 530-50	45,0	60,0		624	525	500	449	349	250	224				

MEI $\geq 0,40$

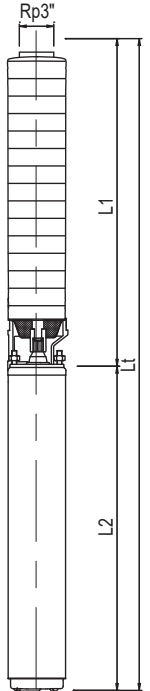


Performans Eğrileri 50 Hz/ Performance Curves at 50 Hz

MEI $\geq 0,40$ 

Teknik Bilgiler (4"- 5"- 6" ULUSU Motor)) / Technical Data (4"- 5"- 6" ULUSU Motor)

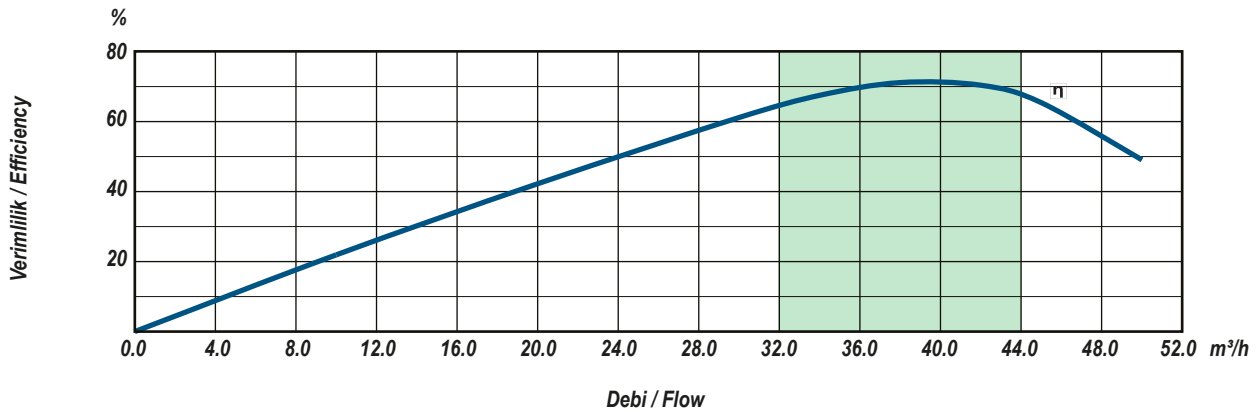
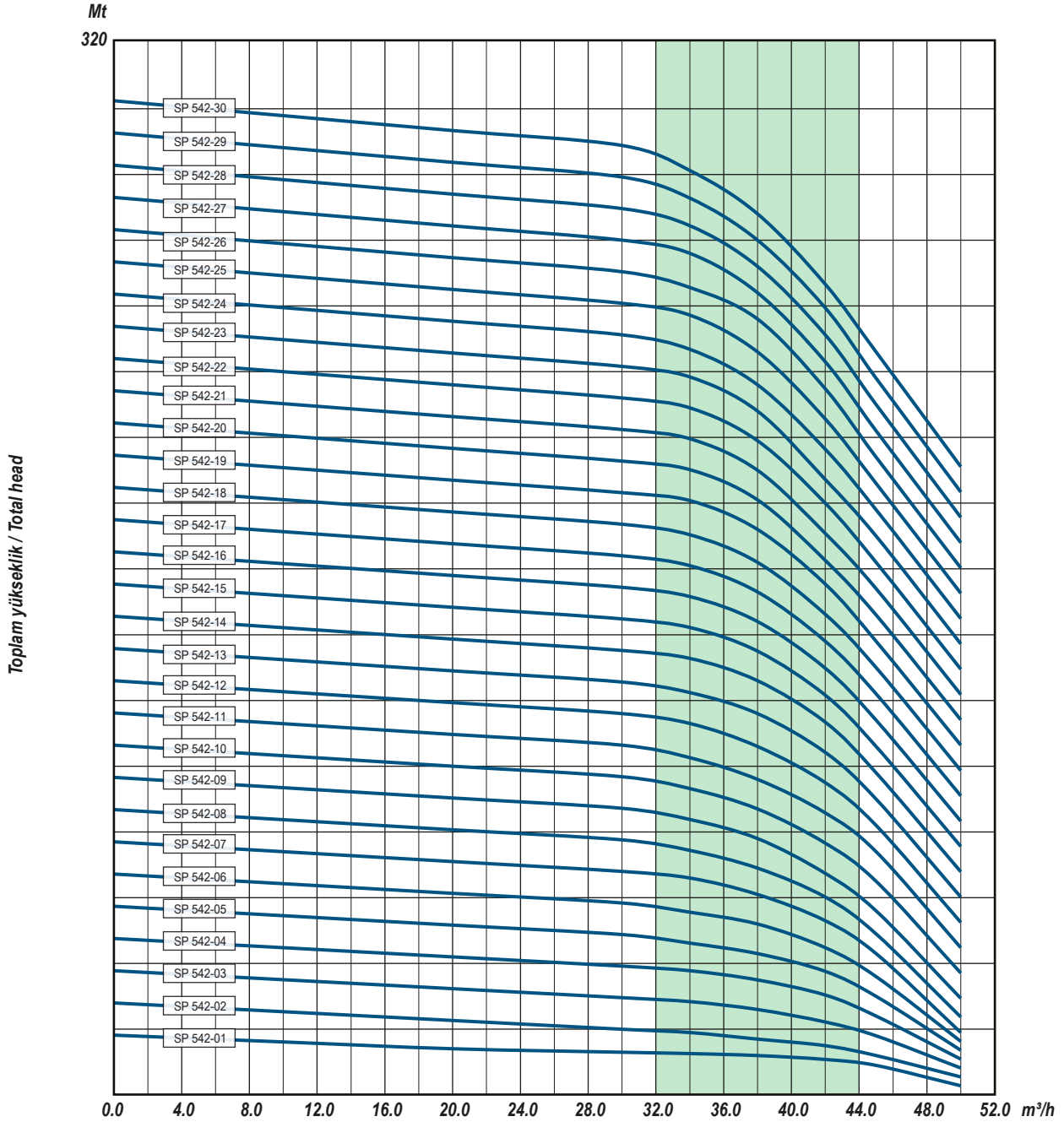
Pompa Modeli (Pump Model)	Motor		Boyutlar / Dimensions (mm)									Ağırlık / Weight (kg)								
	kW	Hp	L1	L2				Lt				Pompa Pump	Motor				Toplam/ Total			
				UP 4"	LP 4"	UP 5"	UP 6"	UP 4"	LP 4"	UP 5"	UP 6"		UP 4"	LP 4"	UP 5"	UP 6"				
SP 542-01	1,1	1,5	330	465	430	-	-	795	760	-	-	6,0	10,6	9,2	-	-	16,60	15,20	-	-
SP 542-02	2,2	3,0	420	556	475	-	-	976	895	-	-	8,0	14,8	11,4	-	-	22,80	19,40	-	-
SP 542-03	2,2	3,0	510	556	475	-	-	1066	985	-	-	10,0	14,8	11,4	-	-	24,80	21,40	-	-
SP 542-04	3,0	4,0	600	600	556	-	-	1200	1156	-	-	13,0	17,9	14,8	-	-	30,90	27,80	-	-
SP 542-05	4,0	5,5	690	635	600	636	630	1325	1290	1326	1320	15,0	19,9	17,9	38,0	46,0	34,90	32,90	53,00	61,00
SP 542-06	5,5	7,5	790	775	635	636	630	1565	1425	1426	1420	17,0	25,0	19,9	38,0	46,0	42,00	36,90	55,00	63,00
SP 542-07	7,5	10,0	880	862	775	681	650	1742	1655	1561	1530	20,0	29,4	25,0	42,0	48,0	49,40	45,00	62,00	68,00
SP 542-08	9,2	12,5	970	-	-	731	690	-	-	1701	1660	22,0	-	-	44,0	50,0	-	-	66,00	72,00
SP 542-09	11,0	15,0	1060	-	-	776	730	-	-	1836	1790	24,0	-	-	48,0	56,0	-	-	72,00	80,00
SP 542-10	11,0	15,0	1150	-	-	776	730	-	-	1926	1880	27,0	-	-	48,0	56,0	-	-	75,00	83,00
SP 542-11	13,0	17,5	1240	-	-	826	780	-	-	2066	2020	29,0	-	-	54,0	60,0	-	-	83,00	89,00
SP 542-12	13,0	17,5	1330	-	-	826	780	-	-	2156	2110	31,0	-	-	54,0	60,0	-	-	85,00	91,00
SP 542-13	15,0	20,0	1420	-	-	876	830	-	-	2296	2250	33,0	-	-	58,0	66,0	-	-	91,00	99,00
SP 542-14	15,0	20,0	1510	-	-	876	830	-	-	2386	2340	36,0	-	-	58,0	66,0	-	-	94,00	102,00
SP 542-15	18,5	25,0	1600	-	-	876	880	-	-	2476	2480	38,0	-	-	58,0	72,0	-	-	96,00	110,00
SP 542-16	18,5	25,0	1700	-	-	876	880	-	-	2576	2580	40,0	-	-	58,0	72,0	-	-	98,00	112,00
SP 542-17	18,5	25,0	1790	-	-	876	880	-	-	2666	2670	43,0	-	-	58,0	72,0	-	-	101,00	115,00
SP 542-18	18,5	25,0	1880	-	-	876	880	-	-	2756	2760	45,0	-	-	58,0	72,0	-	-	103,00	117,00
SP 542-19	22,0	30,0	1970	-	-	876	980	-	-	2846	2950	47,0	-	-	58,0	82,0	-	-	105,00	129,00
SP 542-20	22,0	30,0	2060	-	-	876	980	-	-	2936	3040	50,0	-	-	58,0	82,0	-	-	108,00	132,00
SP 542-21	22,0	30,0	2150	-	-	876	980	-	-	3026	3130	52,0	-	-	58,0	82,0	-	-	110,00	134,00
SP 542-22	26,0	35,0	2240	-	-	-	1030	-	-	-	3270	54,0	-	-	-	88,0	-	-	-	142,00
SP 542-23	26,0	35,0	2330	-	-	-	1030	-	-	-	3360	56,0	-	-	-	88,0	-	-	-	144,00
SP 542-24	26,0	35,0	2420	-	-	-	1030	-	-	-	3450	59,0	-	-	-	88,0	-	-	-	147,00
SP 542-25	26,0	35,0	2514	-	-	-	1030	-	-	-	3544	61,0	-	-	-	88,0	-	-	-	149,00
SP 542-26	30,0	40,0	2610	-	-	-	1110	-	-	-	3720	71,0	-	-	-	98,0	-	-	-	169,00
SP 542-27	30,0	40,0	2700	-	-	-	1110	-	-	-	3810	74,0	-	-	-	98,0	-	-	-	172,00
SP 542-28	30,0	40,0	2790	-	-	-	1110	-	-	-	3900	76,0	-	-	-	98,0	-	-	-	174,00
SP 542-29	30,0	40,0	2880	-	-	-	1110	-	-	-	3990	78,0	-	-	-	98,0	-	-	-	176,00
SP 542-30	37,0	50,0	2970	-	-	-	1190	-	-	-	4160	81,0	-	-	-	106,0	-	-	-	187,00



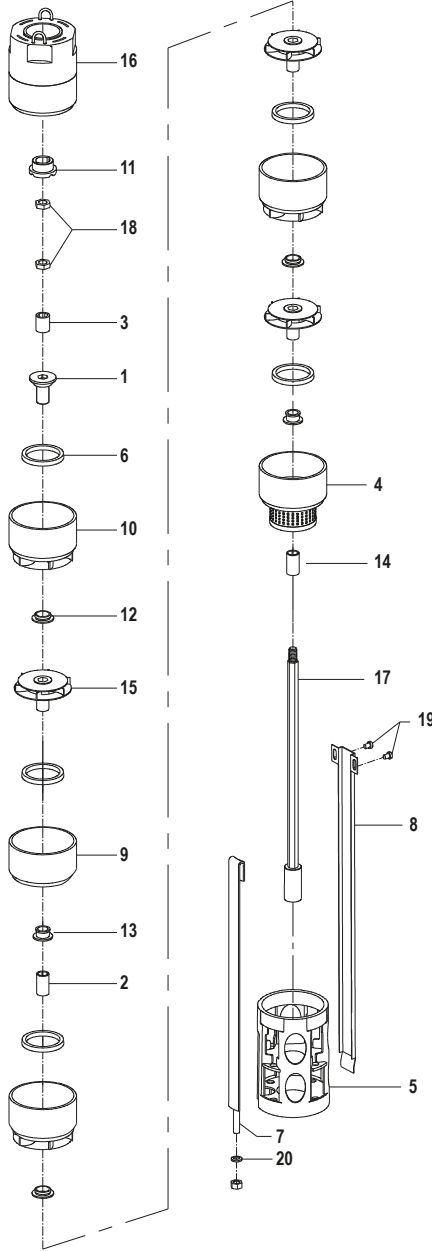
Hidrolik Performans Tablosu 50 Hz/ Table of Hydraulic Performance at 50 Hz

Pompa Modeli (Pump Model)	Çıkış Gücü (Output Power)		Q= Debi / Flow											
			(m³/h)	0,00	30,00	34,00	38,00	42,00	45,00	50,00				
	kW	Hp	(l/sec)	0,00	8,33	9,44	10,56	11,67	12,50	13,89				
SP 542-01	1,1	1,5	MSS / MPH	18	12	12	10	10	9	3				
SP 542-02	2,2	3,0		28	20	18	16	14	12	6				
SP 542-03	2,2	3,0		38	30	24	22	18	15	8				
SP 542-04	3,0	4,0		48	39	31	28	22	18	11				
SP 542-05	4,0	5,5		57	49	37	34	27	21	14				
SP 542-06	5,5	7,5		67	58	44	40	31	24	16				
SP 542-07	7,5	10,0		77	68	50	46	35	27	19				
SP 542-08	9,2	12,5		87	78	56	52	39	30	22				
SP 542-09	11,0	15,0		97	87	63	58	43	33	24				
SP 542-10	11,0	15,0		106	97	69	64	48	36	27				
SP 542-11	13,0	17,5		116	106	76	70	52	39	30				
SP 542-12	13,0	17,5		126	116	82	76	46	42	33				
SP 542-13	15,0	20,0		136	126	88	82	60	45	35				
SP 542-14	15,0	20,0		146	135	95	88	64	48	38				
SP 542-15	18,5	25,0		155	145	101	94	69	51	41				
SP 542-16	18,5	25,0		165	154	108	100	73	54	43				
SP 542-17	18,5	25,0		175	164	114	106	77	57	46				
SP 542-18	18,5	25,0		185	174	120	112	81	60	49				
SP 542-19	22,0	30,0		195	183	127	118	85	63	51				
SP 542-20	22,0	30,0		204	193	133	124	90	66	54				
SP 542-21	22,0	30,0		214	202	140	130	94	69	57				
SP 542-22	26,0	35,0		224	212	146	136	98	72	60				
SP 542-23	26,0	35,0		234	222	152	142	102	75	62				
SP 542-24	26,0	35,0		244	231	159	148	106	78	65				
SP 542-25	26,0	35,0		253	241	165	154	111	81	68				
SP 542-26	30,0	40,0		263	250	172	160	115	84	70				
SP 542-27	30,0	40,0		273	260	178	166	119	87	73				
SP 542-28	30,0	40,0		283	270	184	172	123	90	76				
SP 542-29	30,0	40,0		293	279	191	178	127	93	78				
SP 542-30	37,0	50,0		302	289	197	184	132	96	81				

MEI ≥ 0,40



Pompa Kesiti ve Parça Listesi/ Pump Section and List of Main Components



Referans Numarası	Açıklama	Malzeme Yapısı
1	Kabartma Rondelası	Paslanmaz Çelik (AISI 304)
2	Kol Kelepçesi	Paslanmaz Çelik (AISI 304)
3	Kol	Paslanmaz Çelik (AISI 304)
4	Hazne - Giriş Ağzı	Paslanmaz Çelik (AISI 304)
5	Emiş Ara Bağlantısı	Paslanmaz Çelik (AISI 304)
6	Aşınma Bileziği	Lastik
7	Askı Kilitleme	Paslanmaz Çelik (AISI 304)
8	Kablo Koruyucu	Paslanmaz Çelik (AISI 304)
9	Kelepçe Yuvası	Paslanmaz Çelik (AISI 304)
10	Difüzör	Paslanmaz Çelik (AISI 304)
11	Burç	Paslanmaz Çelik (AISI 304)
12	Burç - Difüzör Halkası	Lastik
13	Burç Kelepçesi	Paslanmaz Çelik (AISI 304)
14	Ara Kelepçe	Paslanmaz Çelik (AISI 304)
15	Fan	Paslanmaz Çelik (AISI 304)
16	Çekvalf Kontrol Yuvası	Paslanmaz Çelik (AISI 304)
17	Pompa Mili	Paslanmaz Çelik (AISI 304)
18	Kilitleme Somunu	Paslanmaz Çelik (AISI 304)
19	Vida	Paslanmaz Çelik (AISI 304)
20	Rondela	Paslanmaz Çelik (AISI 304)

Reference Number	Description	Material
1	Upthrust Washer	Stainless Steel (AISI 304)
2	Sleeve - Bracket	Stainless Steel (AISI 304)
3	Sleeve	Stainless Steel (AISI 304)
4	Chamber - Inlet Screen	Stainless Steel (AISI 304)
5	Suction Inter - Connector	Stainless Steel (AISI 304)
6	Wearing Ring	Rubber
7	Locking Straps	Stainless Steel (AISI 304)
8	Cable Guard	Stainless Steel (AISI 304)
9	Chamber - Bracket	Stainless Steel (AISI 304)
10	Diffuser Chamber	Stainless Steel (AISI 304)
11	Bush - Ct Pad	Stainless Steel (AISI 304)
12	Bush - Diffuser Chamber	Rubber
13	Bush - Bracket	Stainless Steel (AISI 304)
14	Spacer Sleeve	Stainless Steel (AISI 304)
15	Impeller	Stainless Steel (AISI 304)
16	Check Valve Housing	Stainless Steel (AISI 304)
17	Pump Shaft	Stainless Steel (AISI 304)
18	Lock Nut	Stainless Steel (AISI 304)
19	Screw	Stainless Steel (AISI 304)
20	Washer	Stainless Steel (AISI 304)



🌐 www.ulusupompa.com.tr

🏠 MTOSB Atatürk Bulv. No:4 Huzurkent Mersin
✉ info@ulusupompa.com.tr

☎ **0090 444 2 731**